

Dimensions of assembled package:
11' 5" wide x 22' 0" deep x 10' 5" tall



The components of this gym can be combined with others to create different play sets. This is the best order of assembly to create this specific set.

Read this sheet and all instructions included with the different parts before assembly.

See the Instructions and Owner's Manual included in carton 63085-654 for important safety information.

The instructions found in 63085-654 give a complete description for assembling all features of the play tower with the following exceptions:

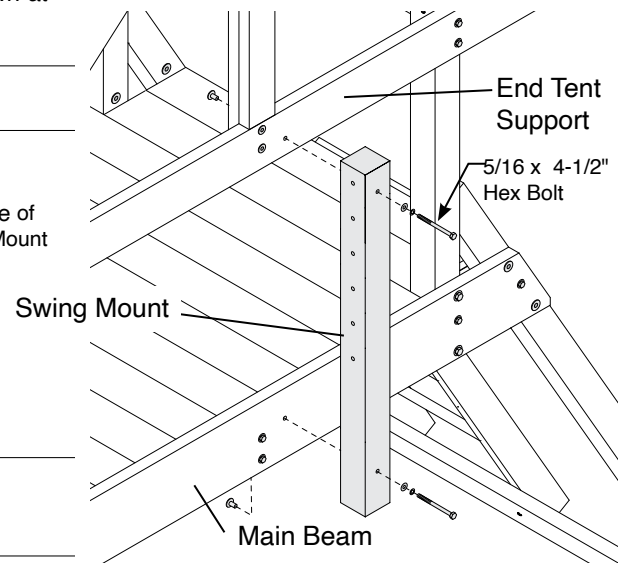
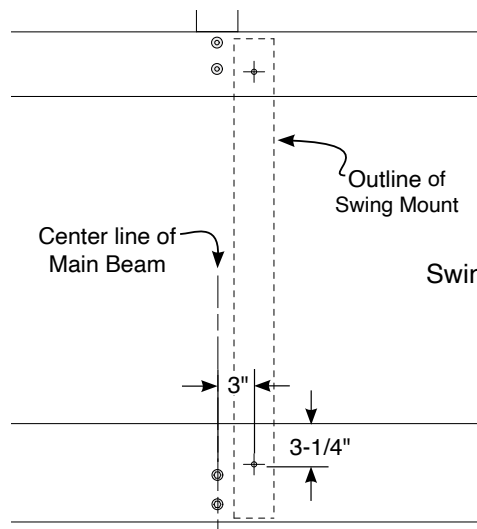
- On step 26, use the added Deluxe Hand Grips instead of the included small yellow hand grips. Use the hand grip hardware included in the main package.
- On step 29, the Swing Beam used will be different than that shown in the manual. The Swing Mount is packed separately from the Swing Beam.

Find the center of the Main Beam on the back of the tower. Mark the Main Beam 3" from the center of the Beam and 3-1/4" below the top edge of the Beam. Drill a 3/8" diameter hole through the Main Beam at the mark.

Hold the Swing Mount against the Back of the Main Beam and End Tent Support. **The counter-bored holes in the Swing Mount should face the gym.** Align the hole near the bottom with the newly drilled hole in the Main Beam. Use a level to make sure the Swing Mount is plumb.

Mark the position of the upper hole on the End Tent Support. Drill a 3/8" diameter hole through the board at the mark. Fasten the Swing Mount to the Main Beam and End Tent Support using two 5/16 x 4-1/2" Hex Bolt Assemblies as shown at right.

- Switch to the instructions included with the Swing Beam Legs (63059-212). Install the Swing Beam.
- Once the beam is installed, continue assembling the tower.
- Step 35. Wait to install the wall slats until after installing the Monkey Bar.
- Mount the Monkey Bar (63082-102) to the front of the tower in the position shown above.
- Install the wall slats as shown above. Continue assembly.
- Please note: the Eastbridge comes with a Scoop Slide rather than the slide shown in step 37. Installation is the same. Two additional slide bolts are taped to the slide.



Cartons for this Play Set:

1	63085-641	Northbridge Box 1 (Hardware)
1	63085-652	Northbridge Box 2
1	63085-603	Northbridge Box 3
1	63085-654	Northbridge Tent (Instructions)
1	63045-505	Tire Swing (Hardware)
1	8364-400	Scoop Slide 10ft.
1	63061-202	Swing Beam - 3 Pos Premium Pine
1	63059-212	Swing Beam Legs 7ft. (Hdwre & Inst.)
1	31820-102	Swing Mount
1	AA934-204	2 Swings, 1 Ring Trapeze
1	63082-102	Monkey Bar (Hdwre & Instr)
1	50574-700	Slide Bolt Bag (taped to slide)
2	AJ957-400	Deluxe Hand Grips (Hdwre & Inst.)

- When finished check that all fasteners are secure.