

If you have problems or questions about your Creative Playthings play set, contact Creative Playthings Customer Service at 1-800-598-4997 or [customerservice@creativeplaythings.com](mailto:customerservice@creativeplaythings.com)

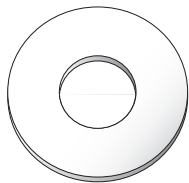
This product was designed for use with Creative Playthings Funtime™, Basic Pine™, and Playtime™ Swing Beams. Read the assembly instructions provided with your set for additional warnings and safety information.

Do NOT allow more than 175 lbs. on multiple use swing accessories such as the Back-to-Back Glider.

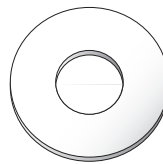
## Parts

<b>50530-400</b>		<b>Glider Bracket Box</b>	
2	14226-400	Glider Support, Green	
4	15144-950	Plug, 50Mm Square, Black	
<b>50530-700</b>		<b>Glider Bracket Hardware</b>	
4	12002-206	Flat Washer 5/16"	
4	17036-1802	Lag Screw 5/16 x 4-1/2"	
4	12052-107	3/8" Nylock Nut	
8	12002-207	3/8" Flat Washer	
4	14228-100	NyGlide Swing Hanger	

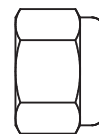
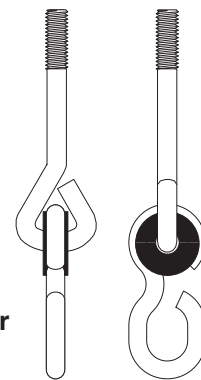
Swing Hanger for Glider  
(Not to Scale)



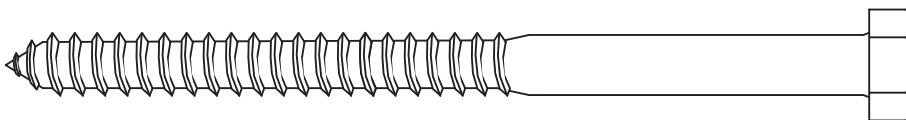
3/8" Flat Washer



5/16" Flat Washer



3/8" Nylon  
Lock Nut



5/16 x 4-1/2" Lag Screw

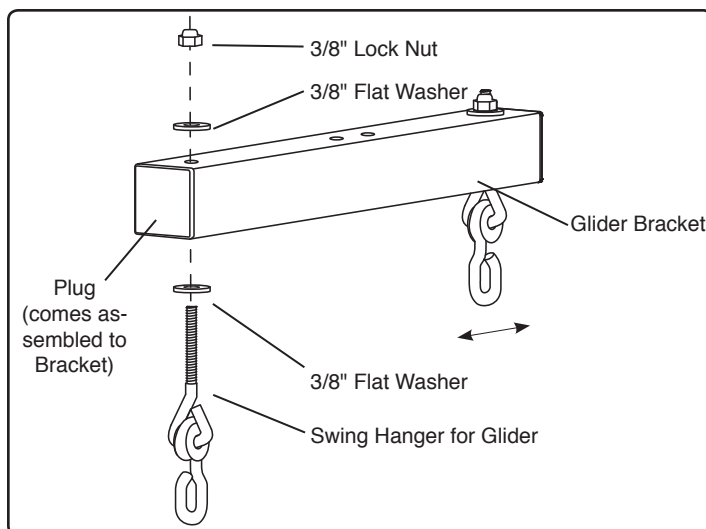
# ASSEMBLY INSTRUCTIONS

## STEP 01 – Assemble Glider Brackets:

Push the bolt end of a Swing Hanger for Glider through a 3/8" Flat Washer, the hole at one end of a Glider Bracket, another 3/8" Flat Washer and secure using a 3/8" Lock Nut. Make sure that the Hanger swings in line with the length of the Glider Bracket.

The Swing Hanger should project no more than two threads above the Lock Nut. If it projects more than two threads, add more Flat Washers below the Lock Nut.

Fasten another Swing Hanger at the other end of the Glider Bracket in the same way. Repeat with the second Glider Bracket.



## STEP 02 – Drill Holes in Top of Beam:

The Creative Playthings Funtime Swing Beam is pre-drilled for Glider Brackets. There are four 1/4" diameter holes on the top of the Swing Beam.

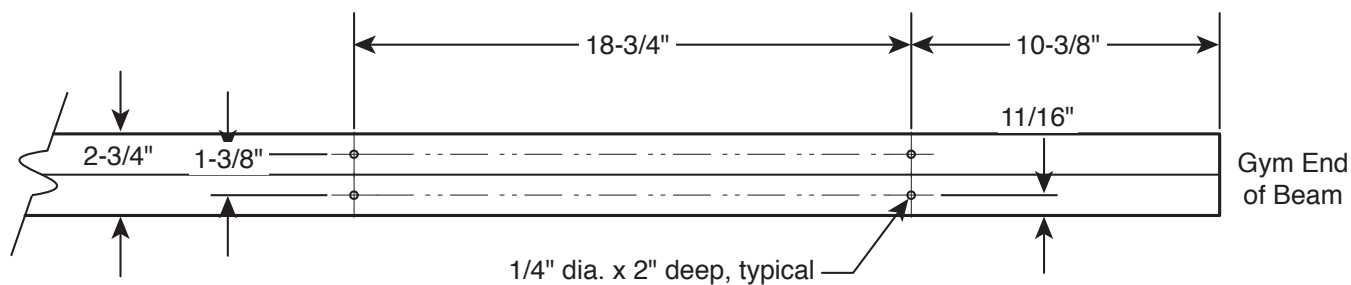
The drawing below shows a top view of the Creative Playthings Basic Pine and Playtime Beam, 2014 and later (Model Number 60081-102). Drill four holes 1/4" diameter and 2-1/2" deep into the top of the beam at the positions shown.

If the Glider Bracket is to be used on a beam other than the Creative Playthings Funtime™, Playtime™ 2014 or Basic Pine™ Swing Beam the end user must determine appropriate position, drilling and spacing between Brackets.

For Playtime™ Swing Beams prior to the 2014 model, do not use the measurements below. Mount the Glider Brackets directly above the swing mount positions closest to the gym. Do not install the swing mounts below the Glider Brackets.

**Creative Playthings cannot be responsible for the safety of Brackets installed on Beams other than those listed above.** (See [www.cpsc.gov/CPSC/PUBS/325.pdf](http://www.cpsc.gov/CPSC/PUBS/325.pdf) for more information.)

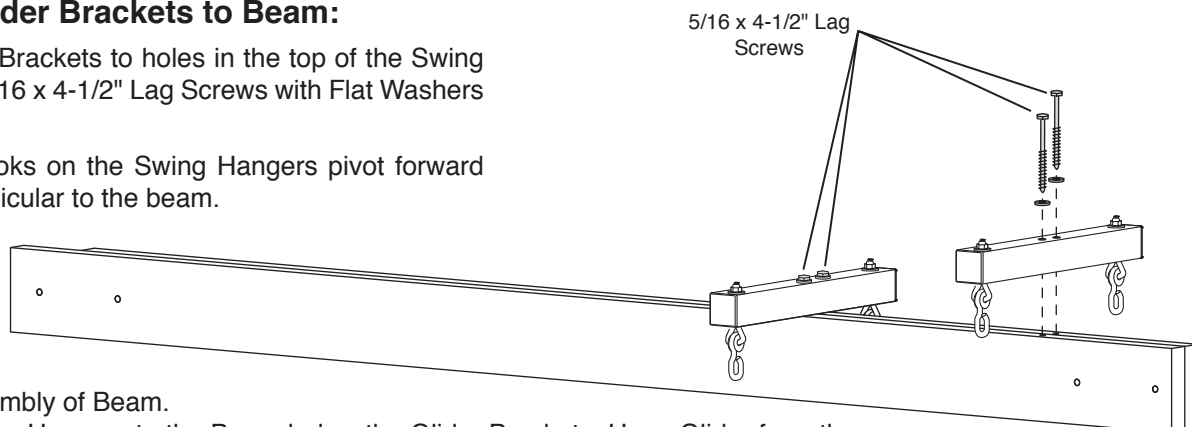
Never use this bracket system with a beam that has a board on top of the beam or a seam between boards that conflicts with the holes used for Lag Screws (see next step).



## STEP 03 – Glider Brackets to Beam:

Secure the Glider Brackets to holes in the top of the Swing Beam using two 5/16 x 4-1/2" Lag Screws with Flat Washers each as shown.

Make sure the hooks on the Swing Hangers pivot forward and back, perpendicular to the beam.



Proceed with Assembly of Beam.

Do not fasten Swing Hangers to the Beam below the Glider Brackets. Hang Glider from the Glider Brackets as shown on page one. Glider assembly instructions are included separately.